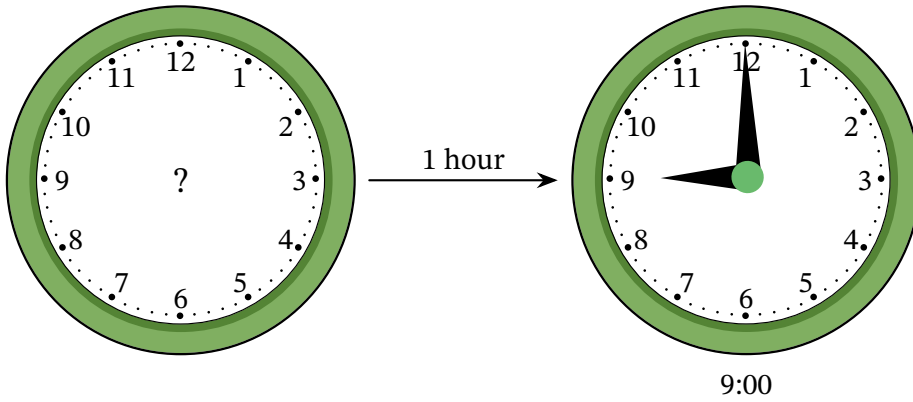


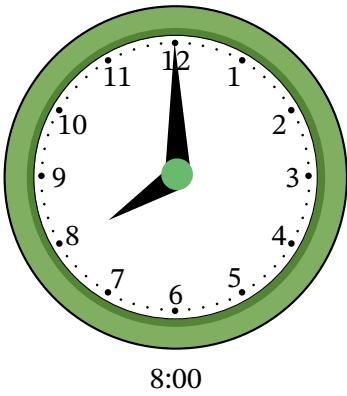
Worksheet: Calculating Start Times



Q1: It is 9 o'clock.

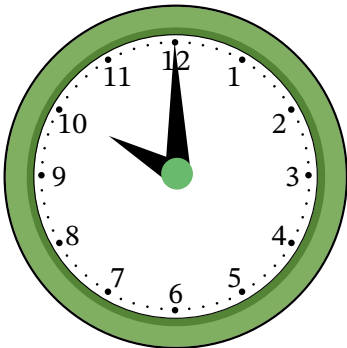


Pick the time it was 1 hour ago.



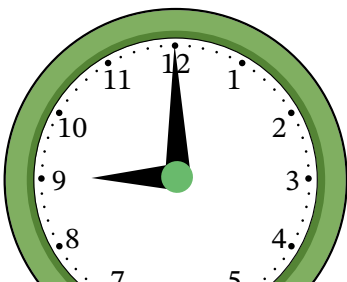
8:00

A

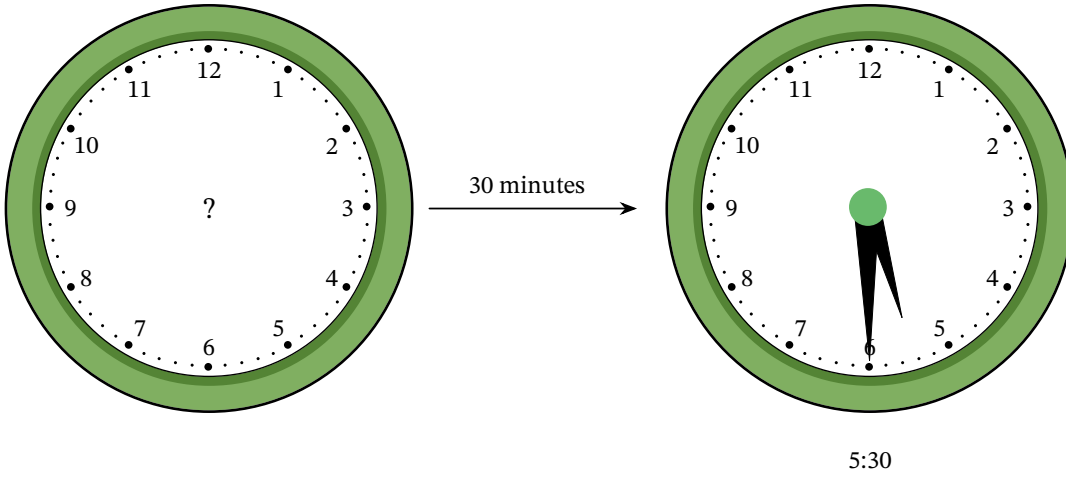


10:00

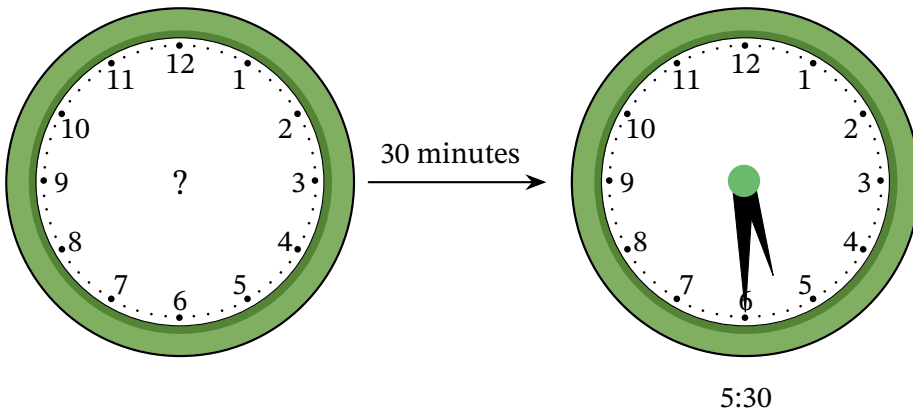
B



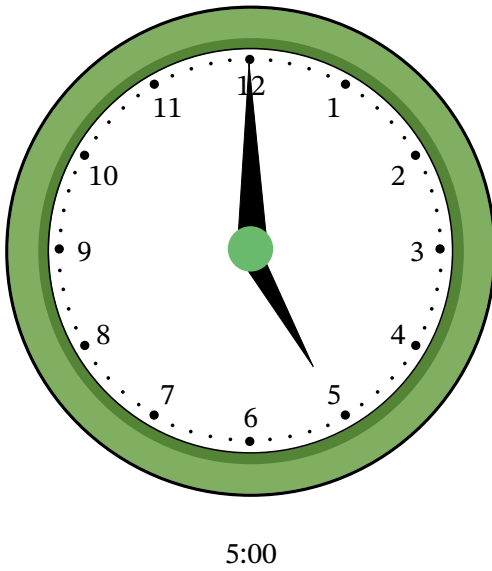
Q2: It is half past 5.



Pick the time it was 30 minutes ago.

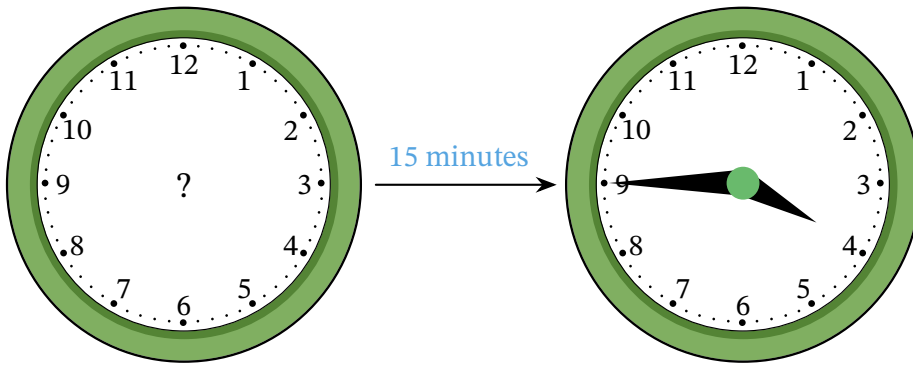


A



B

Q3: It is quarter to 4.



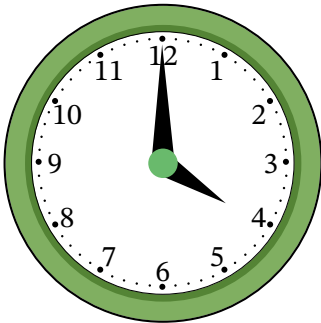
3:45

Pick the time it was 15 minutes ago.



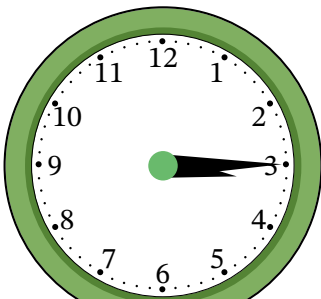
3:30

A



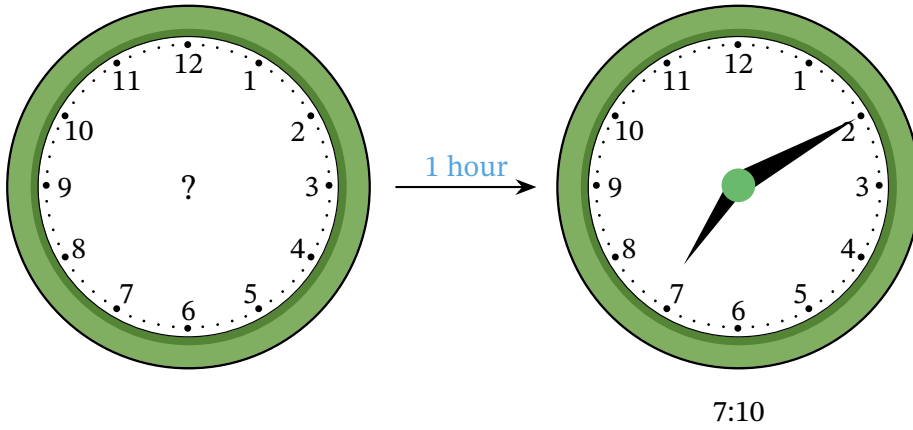
4:00

B

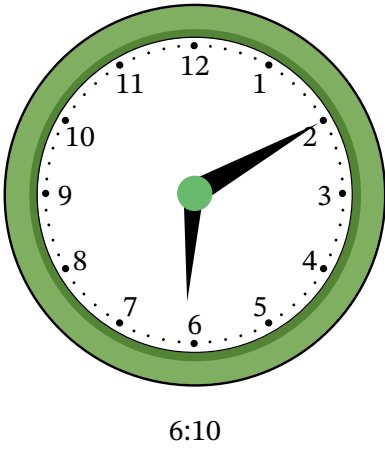


4

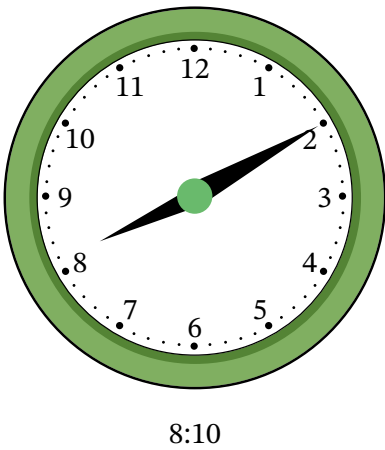
Q4: It is 10 minutes past 7.



Pick the time it was 1 hour ago.

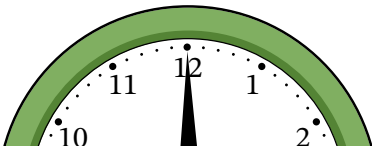


A

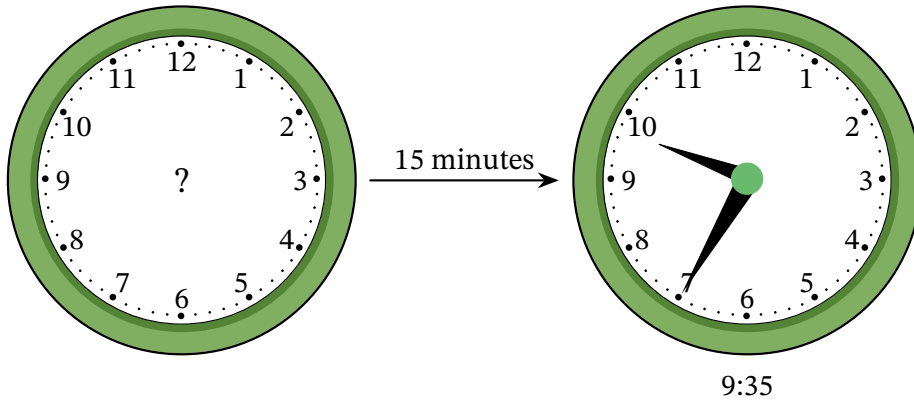


B

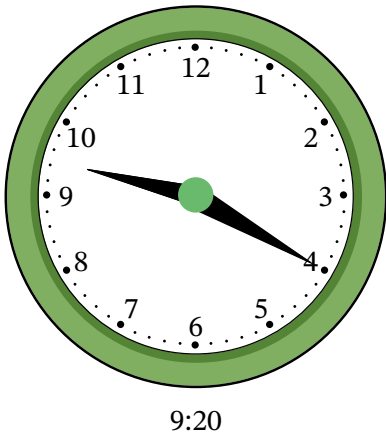
5



Q5: It is 35 minutes after 9.

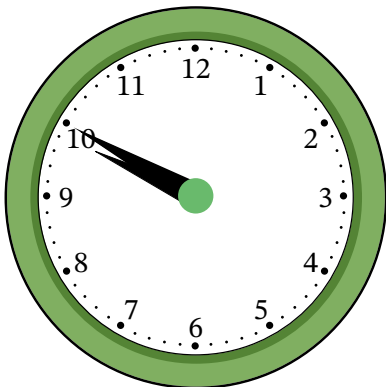


Pick the time it was 15 minutes ago.



9:20

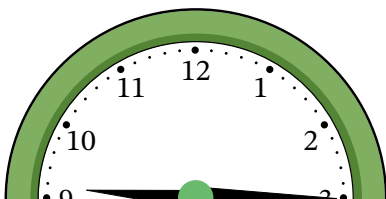
A



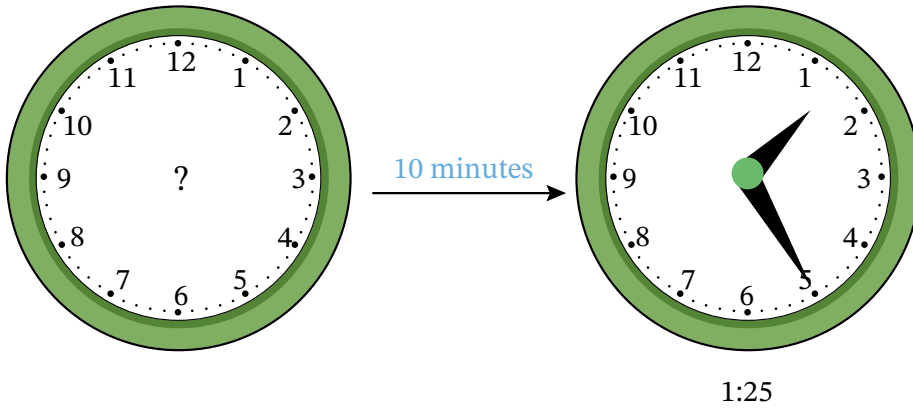
9:50

B

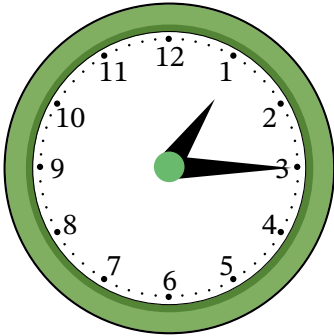
6



Q6: It is 25 minutes after 1.

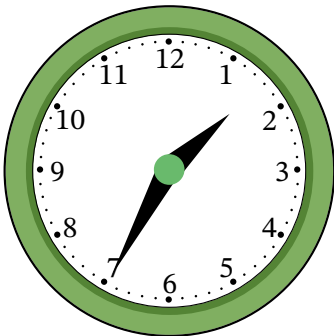


Pick the time it was 10 minutes ago.



1:15

A



1:35

B

