

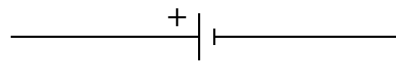
# Worksheet: Circuit Symbols and Diagrams



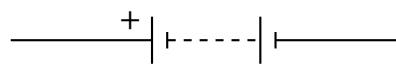
**Q1:** The diagram shows four circuit symbols. Which circuit symbol represents a battery?



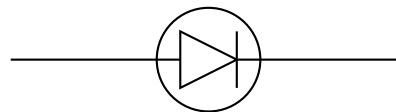
Question Video



(a)



(b)



(c)



(d)

A (a)

B (d)

C (b)

D (c)

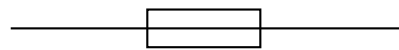
**Q2:** If the current through a point in a circuit is \_\_\_\_, then \_\_\_\_ charge is passing through that point each second.



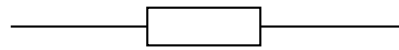
Question Video

- A higher, less
- B higher, more
- C lower, more
- D lower, no

**Q3:** The diagram shows two circuit symbols. Which one represents a fuse?



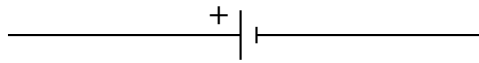
(a)



(b)

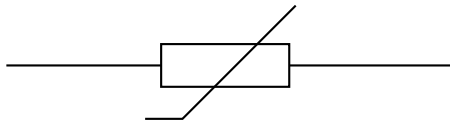
- A (a)
- B Neither
- C Both
- D (b)

**Q4:** The diagram shows the symbol for a component of an electrical circuit.  
What does this symbol represent?



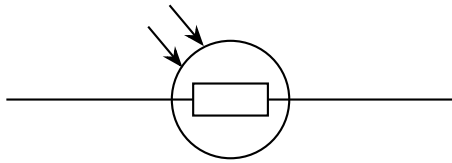
- A A battery
- B A cell
- C A resistor
- D A voltmeter
- E An LED

**Q5:** The diagram shows the symbol for a component of an electrical circuit.  
What type of component does this symbol represent?



- A A variable resistor
- B A thermistor
- C A resistor
- D A fuse
- E A diode

**Q6:** The diagram shows the symbol for a component of an electrical circuit.  
What type of component does this symbol represent?



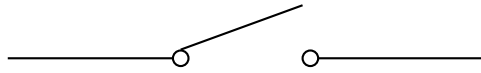
- A A filament lamp
- B A light-dependent resistor (LDR)
- C A battery
- D A light-emitting diode (LED)
- E A diode

**Q7:** The diagram shows the symbol for a component of an electrical circuit.  
What does this symbol represent?



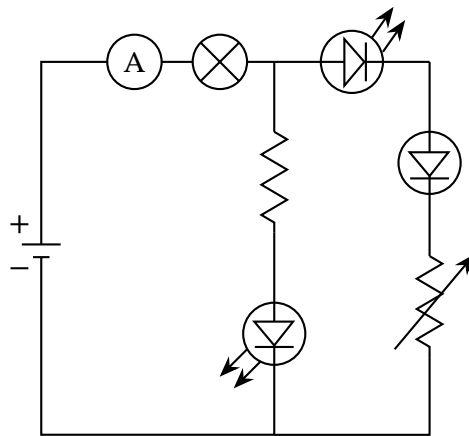
- A A resistor
- B A fuse
- C A variable resistor
- D A thermistor
- E A battery

**Q8:** The diagram shows the symbol for a component of an electrical circuit.  
What does this symbol represent?



- A A closed switch
- B A fuse
- C A variable resistor
- D A resistor
- E An open switch

**Q9:** The diagram shows an electrical circuit.



► How many light-emitting diodes does the circuit contain?

A 4

B 3

C 1

D 2

E 0

► How many thermistors does the circuit contain?

A 4

B 3

C 2

D 0

E 1

► How many voltmeters does the circuit contain?

A 4

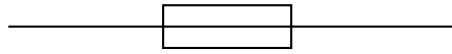
B 3

C 2

D 0

E 1

**Q10:** The diagram shows four circuit symbols. Which symbol represents a variable resistor?



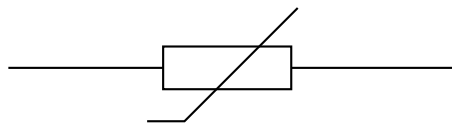
(a)



(b)



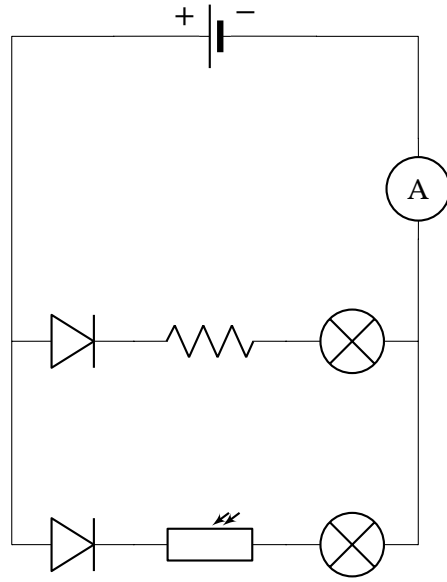
(c)



(d)

- A (d)
- B (c)
- C (b)
- D (a)

**Q11:** The diagram shows an electrical circuit.



► How many diodes does the circuit contain?

- A 3
- B 0
- C 4
- D 1
- E 2



► How many LDRs does the circuit contain?

A 2

B 3

C 4

D 0

E 1

► How many voltmeters does the circuit contain?

A 2

B 3

C 4

D 1

E 0

► How many ammeters does the circuit contain?

A 2

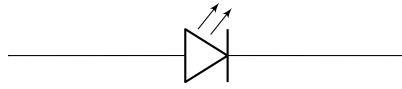
B 3

C 4

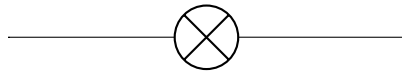
D 0

E 1

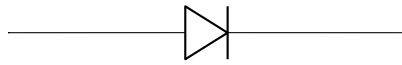
**Q12:** The diagram shows four circuit symbols. Which circuit symbol represents a filament bulb?



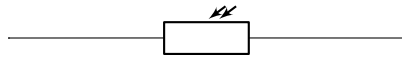
(a)



(b)



(c)



(d)

- A (b)
- B (c)
- C (d)
- D (a)